

OVERVIEW

Advanced Meter



www.alpineenergy.co.nz

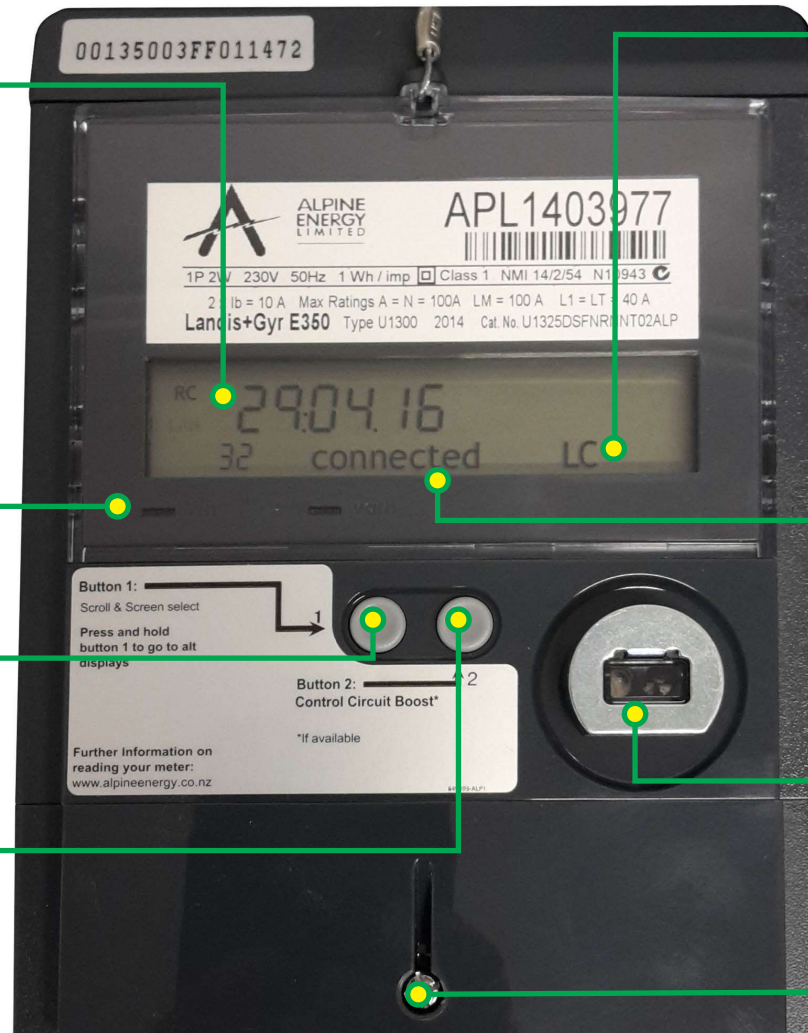
The **Display Panel** is where you will find your usage information. The information scrolls automatically every 4 seconds.

Red Lights: The static red light indicates power is being used. The pulsing red light indicates the rate of usage. If these lights are not flashing, no usage is being recorded on this meter.

Button 1 allows you to scroll through the information on the Display Panel, overriding the automatic scroll.

Button 2 is not in use

All meters installed by Alpine Energy have a **Tamper Detect Switch** and a **Seal** to deter unauthorised people from opening the meter. This protects the integrity of your usage information.



LC/LC1 indicates there is a controlled load on this meter, usually only for appliances that run overnight or in off-peak times i.e. hot water, night store or underfloor heating.
LC = load control is NOT operating.
Lc1 = load control is operating.

If neither indicated, the meter does not have a controlled load function.

Meter Connection Status:

the display will normally read 'connected' and will only change if the supply has been disconnected by your retailer. If your meter shows 'disconnected' and you need the meter to be connected, contact your retailer.

Optical Port: this is used by meter technicians for programming and collecting meter information.

Certification Seal:
If broken, contact your retailer.